

# Western Red Cedar Timbers Rough Sawn, Appearance Grade

[WRCLA Website](#)

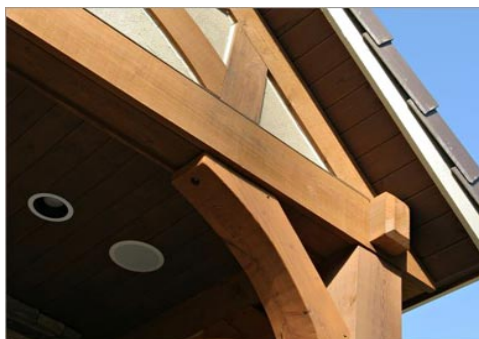
Stock Sizes & Lengths	8'	10'	12'	14'	16'	18'	20'	24'
4x4	X	X	X		X			
4X6	X	X	X	X	X		X	
4X8	X	X	X		X	X	X	X
4X12	X	X	X	X	X	X	X	X
6X6	X	X	X	X	X	X	X	X
6X8	X	X	X		X	X	X	X
6X12	X	X	X	X	X	X	X	X
8X8	X	X	X	X	X	X	X	X
8X12	X	X	X	X	X	X	X	X

## Cut-To-Order Timbers

Our onsite mill can custom size timbers to specific dimensions. Timbers can be re-sawn or surfaced to smooth four sides (S4S). We are committed to turning your order quickly to keep your project moving. Please contact one of our knowledgeable sales associates for a quote on these services

## Special Order Timbers

Our knowledgeable sales staff can provide quotes on all different sizes of cedar and fir beams (Ex. 8x14, 10x14, 12x16). At Schutte Lumber we have timber shipments arriving monthly from both our cedar and fir beam suppliers. This volume enables us to supply these unique sizes while providing our customers with a quick lead time.



**Schutte**  
**LUMBER CO.**  
*A Landmark Company  
Since 1880*

3001 Southwest Boulevard \* Kansas City, MO 64108-3616  
816-753-6262 \* 800-456-2148 \* Fax 816-753-7935  
[www.SchutteLumber.com](http://www.SchutteLumber.com)